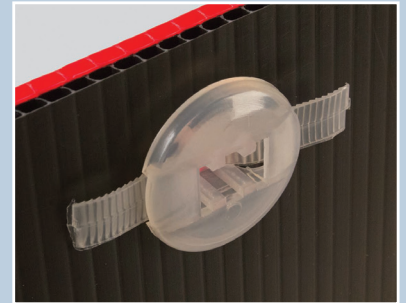
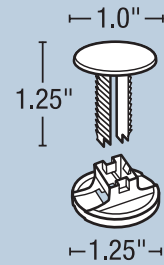
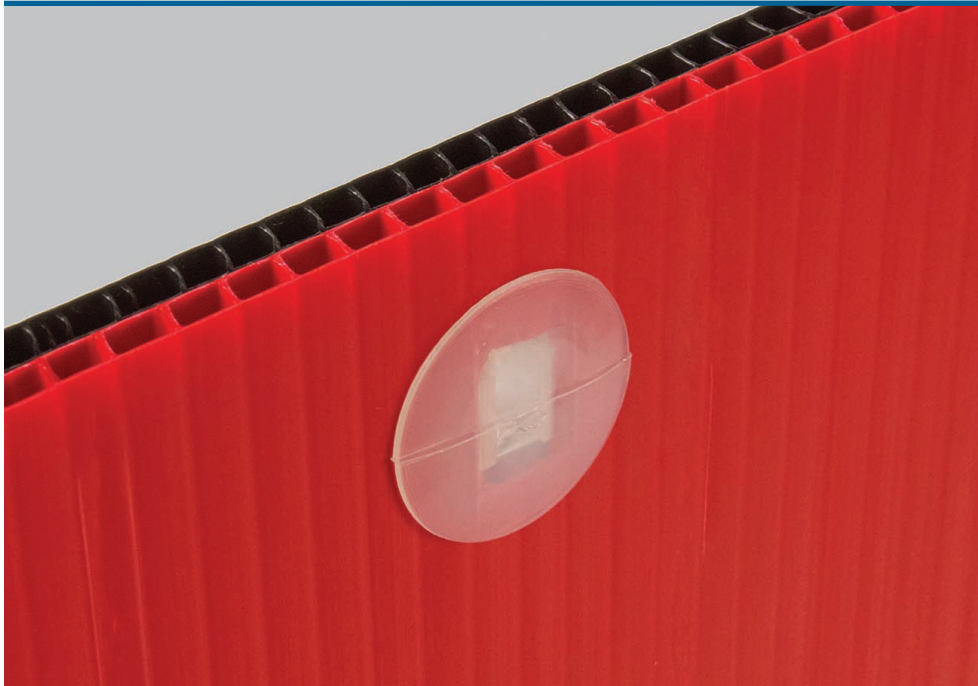


# Extra-Duty Panel Fastener



## Features and Benefits

- ◆ Heavy-duty panel fastener with 2-piece design is versatile
- ◆ Connect back-to-back corrugated units attach corrugated shelving to displays
- ◆ Can also be used to mount graphics to wire grids, or to connect thick boards
- ◆ Fastens .375" to 1" thickness
- ◆ Heads measure 1" and 1.25"; fits .4375"-.75" diameter hole
- ◆ Natural polypropylene

## Versatile and durable fastening solution

The extremely versatile Extra-Duty Panel Fastener is a durable yet economical fastening solution for corrugated panels and units, with a fastening capacity from .375" to 1".

Use it to connect back-to-back corrugated units, add wire legs to corrugated displays, or attach corrugated shelving to display fixtures. It can also be used to mount graphics to wire grids or to connect thick boards.

## Specifications

Item No.	Ref. No.	Dimensions	Finish	Pack
8507484850	-	1.25" L	Natural	1

*Additional sizes and colors can be made to order (minimum quantities apply.)*

20190212

For more information,  
call **800.422.2547**  
or visit **www.siffron.com**

**siffron**<sup>™</sup>  
always on